

RASHID YACHTS & MARINA



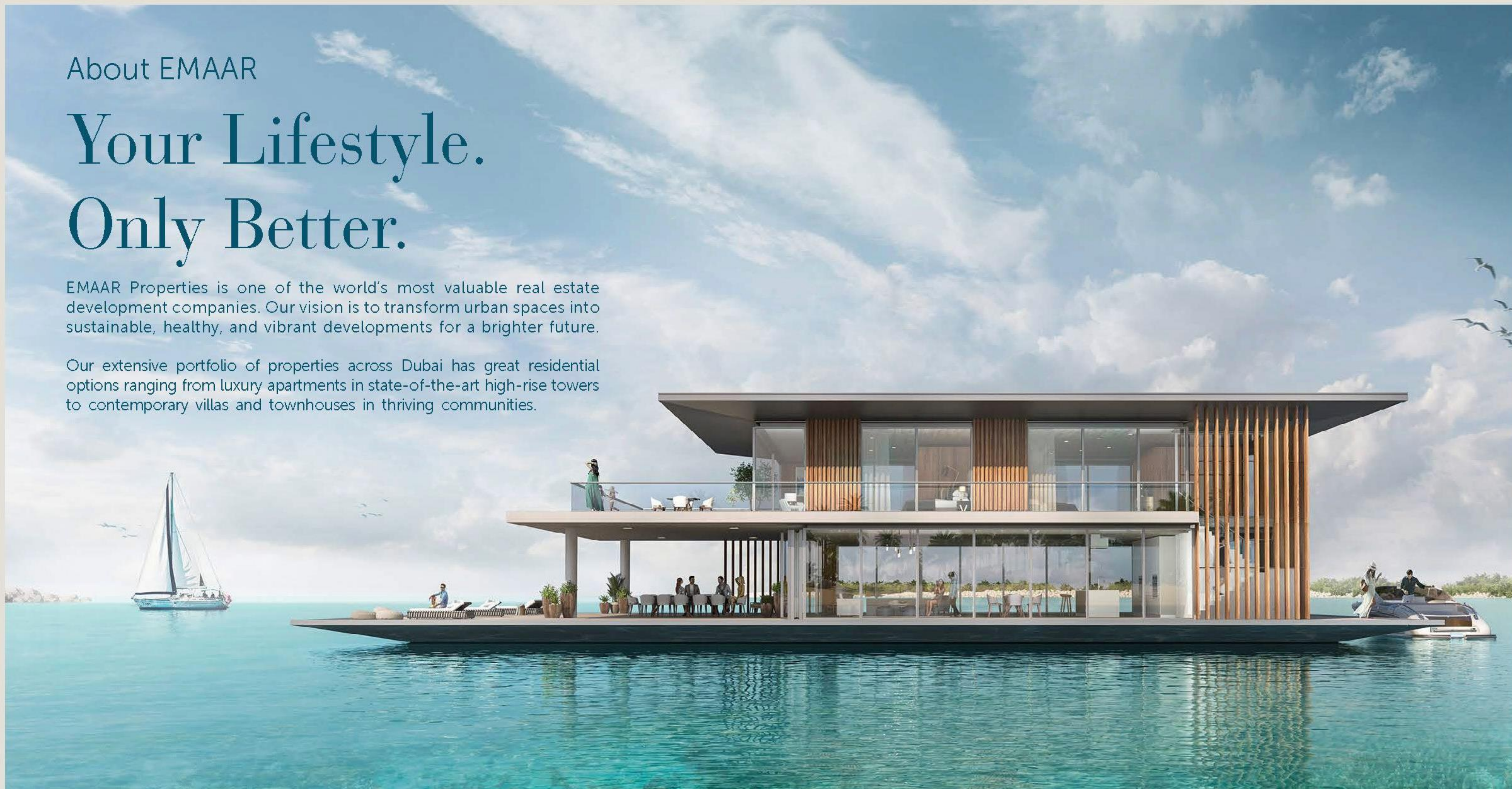
EMAAR

About EMAAR

Your Lifestyle. Only Better.

EMAAR Properties is one of the world's most valuable real estate development companies. Our vision is to transform urban spaces into sustainable, healthy, and vibrant developments for a brighter future.

Our extensive portfolio of properties across Dubai has great residential options ranging from luxury apartments in state-of-the-art high-rise towers to contemporary villas and townhouses in thriving communities.



The Global Lifestyle Developer

An undisputed leader in the global real estate market, EMAAR has grown over the years to become the largest real estate developer outside of mainland China. You will be investing with one of the most-loved brands in the world.

Revenue (AED)

28.27BN

As of 31 Dec 2021

Net Profit (AED)

3.8BN

FY 2021

Market Cap (AED)

40BN

FY 2021

Residential Units
Delivered

81,600+

Residential Unit Under
Development

35,200+

*Source: The World's Best Regarded Companies 2019 list by Forbes



An aerial photograph of the Portofino harbor in Italy. The harbor is filled with numerous sailboats and smaller boats. The surrounding area is a lush, green hillside with several buildings, including a prominent church with a tall spire. The sky is a clear, deep blue, and the water reflects the light, creating a shimmering effect. The word "PORTOFINO" is overlaid in the center of the image in a bold, white, sans-serif font.

PORTOFINO



Welcome to Rashid Yachts & Marina

Set Your Sights on a New Horizon

Dubai's latest and unprecedented residential marina masterpiece on the Arabian Gulf coast is driven by a desire to change the meaning of sophistication. An architectural endeavour that offers a new interpretation of luxurious seafront living.

Development Statistics



Total GFA
345,140 sqm



3,071
Residential Units



Retail GFA
13,900



Everything you need or want is minutes away

10 Min.

to Sheikh Zayed Road

15 Min.

to Dubai International Airport

20 Min.

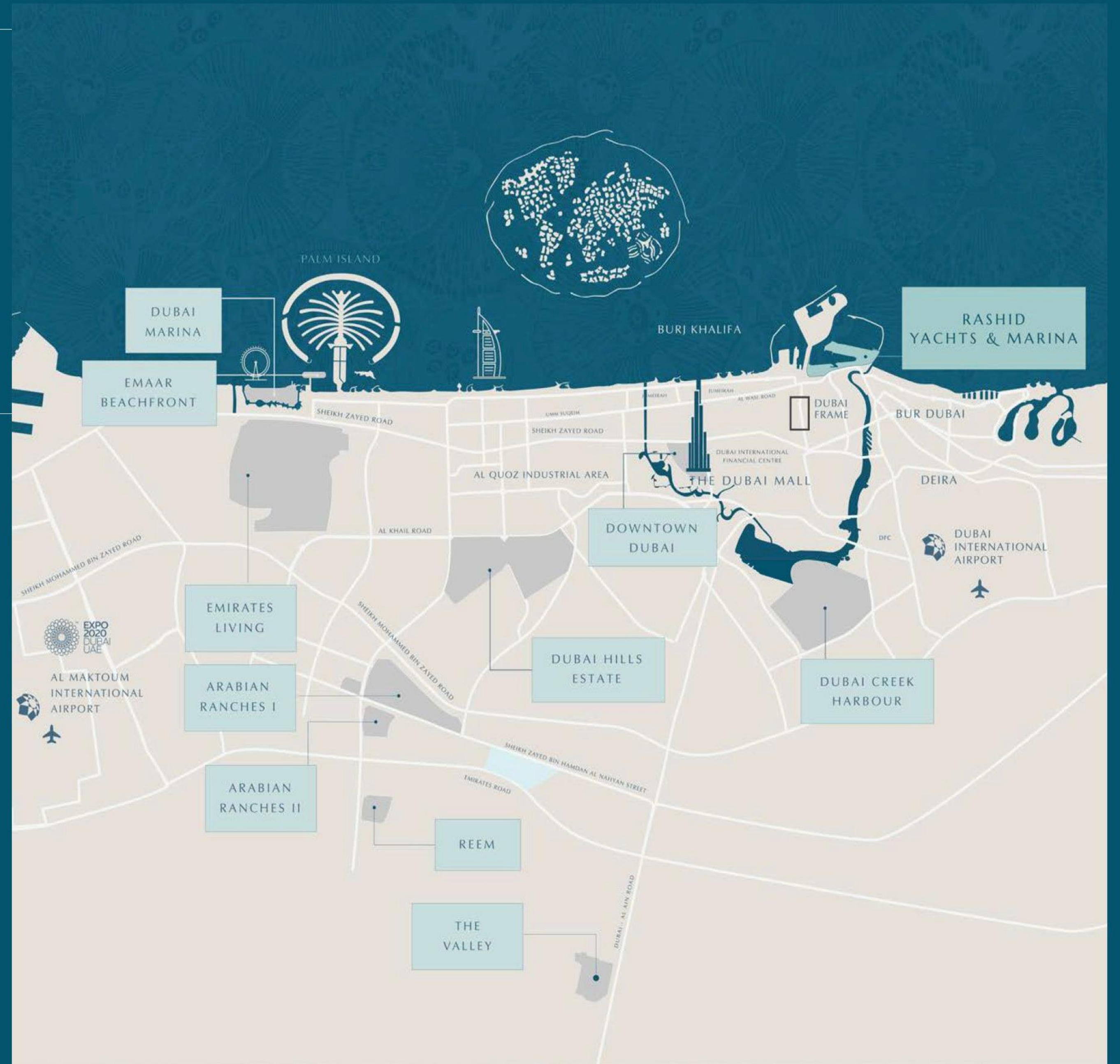
to Downtown Dubai

20 Min.

to The Dubai Mall / Burj Khalifa

20 Min.

to Dubai Creek Harbour

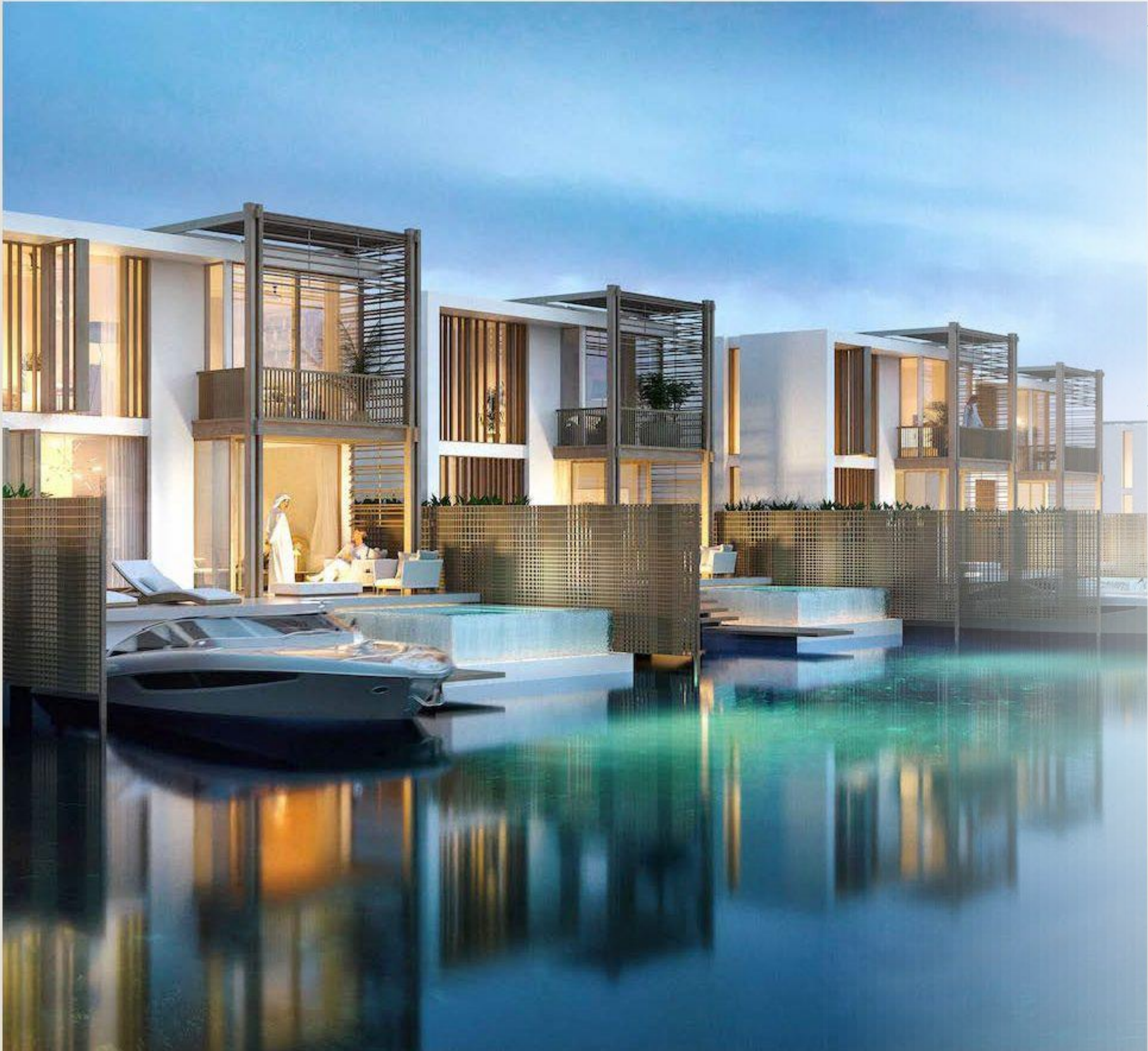


Redefining Seafront Luxury

A contemporary residential oasis offering sophisticated amenities, tranquil surroundings, and exciting nearby attractions. Located just minutes from Dubai's best destinations, Rashid Yachts & Marina offers the benefits of both retreat and adventure.

Bask in the sun, sail the tranquil blue waters, shop at world-famous luxury retailers, and explore a unique art and cultural scene.





Premium Yachting Destination

Generous Promenade

Floating Yacht Club

430 Berths

QE2 Hotel

Hospitality on the water

Private Beach Club

Masterplan

- ① The Marina & The Promenade
- ② The Canal Pool
- ③ QE2
- ④ Hospitality on the Water
- ⑤ Founder's House
- ⑥ Pedestrian Bridge
- ⑦ The Museum
- ⑧ Floating Restaurants
- ⑨ Marina / Yacht Berths
- ⑩ The Theatre
- ⑪ Ferry Station
- ⑫ Boutique Hotel
- ⑬ Private Beach Club





Living Life to the Fullest

During the day, or long after the sun dips beyond the sea's horizon, the Promenade is the essence of the Marina's thriving life with a rich variety of dining options and an eclectic selection of stylish shops and designer boutiques that will accommodate your every need. So just sit, relax, and enjoy life!



**Venetian
Piazza**



**Pedestrian
Harbour Bridge**



**A Floating
Restaurant**



**Views of Burj Khalifa
& the Sea**



**6 Interconnected
District Parks**

Eclectic Dining

Seafront dining at Rashid Yachts & Marina's promenade is always an experience; floating restaurants offering a mouth-watering range of local and international cuisine, cafes, lounges and beach bars.

And with Downtown Dubai just a stone's throw away, buzzing restaurants and glamorous dining and entertainment hotspots are also accessible within minutes throughout the year.



PROMENADE



OPULENCE LIVING





EMAAR

RASHID YACHTS & MARINA

SEAGATE

EMAAR



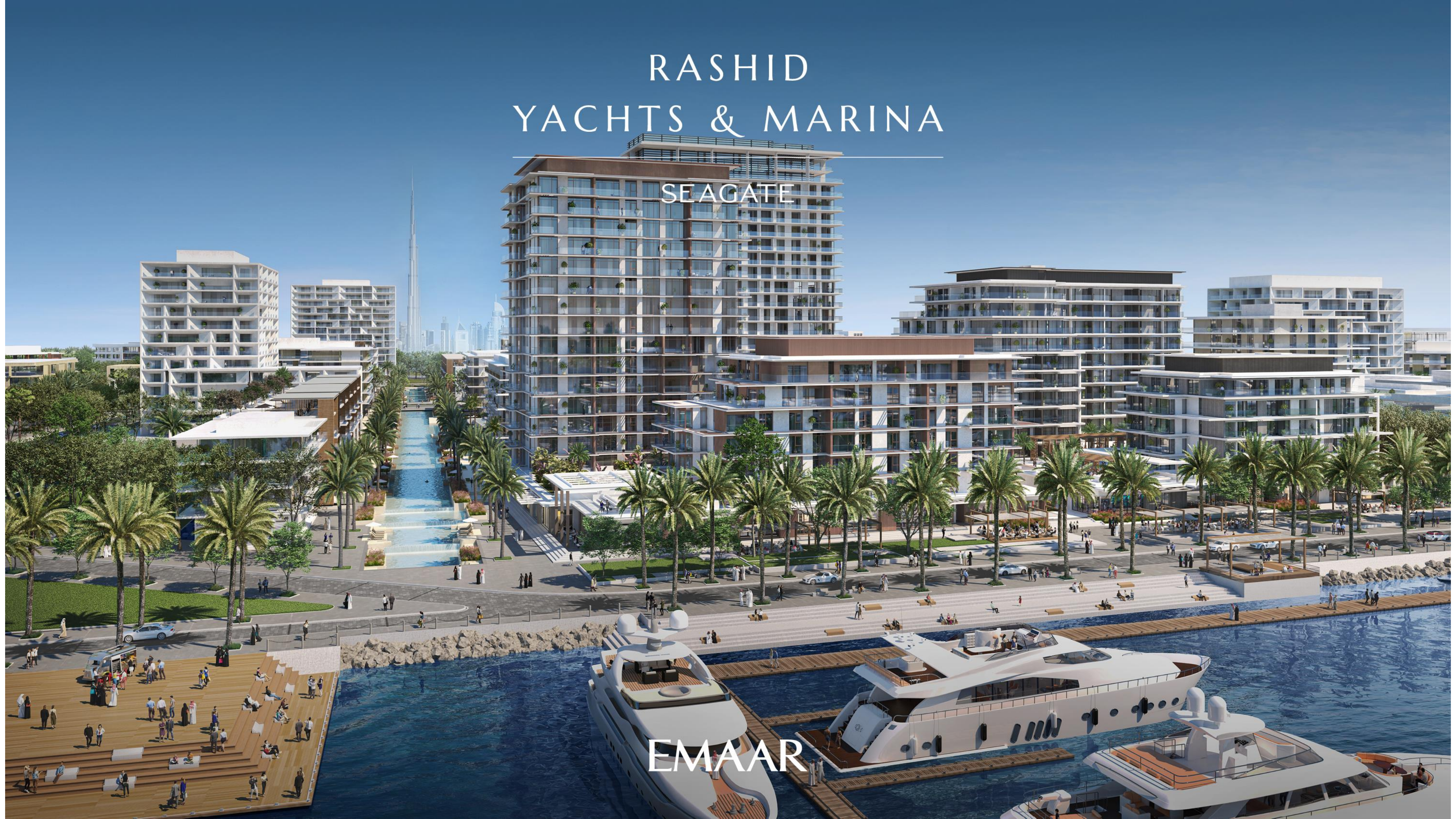
Next-Level
Luxury Residences



RASHID YACHTS & MARINA

SEAGATE

EMAAR



Sea Gate – Features

Sea Gate



1, 2, 3-BEDROOM
APARTMENTS &
4-BEDROOM PENTHOUSES



500-METRE LONG
CANAL POOL



RECREATION
ROOM



COMMUNITY
PODIUM WITH
A GYM



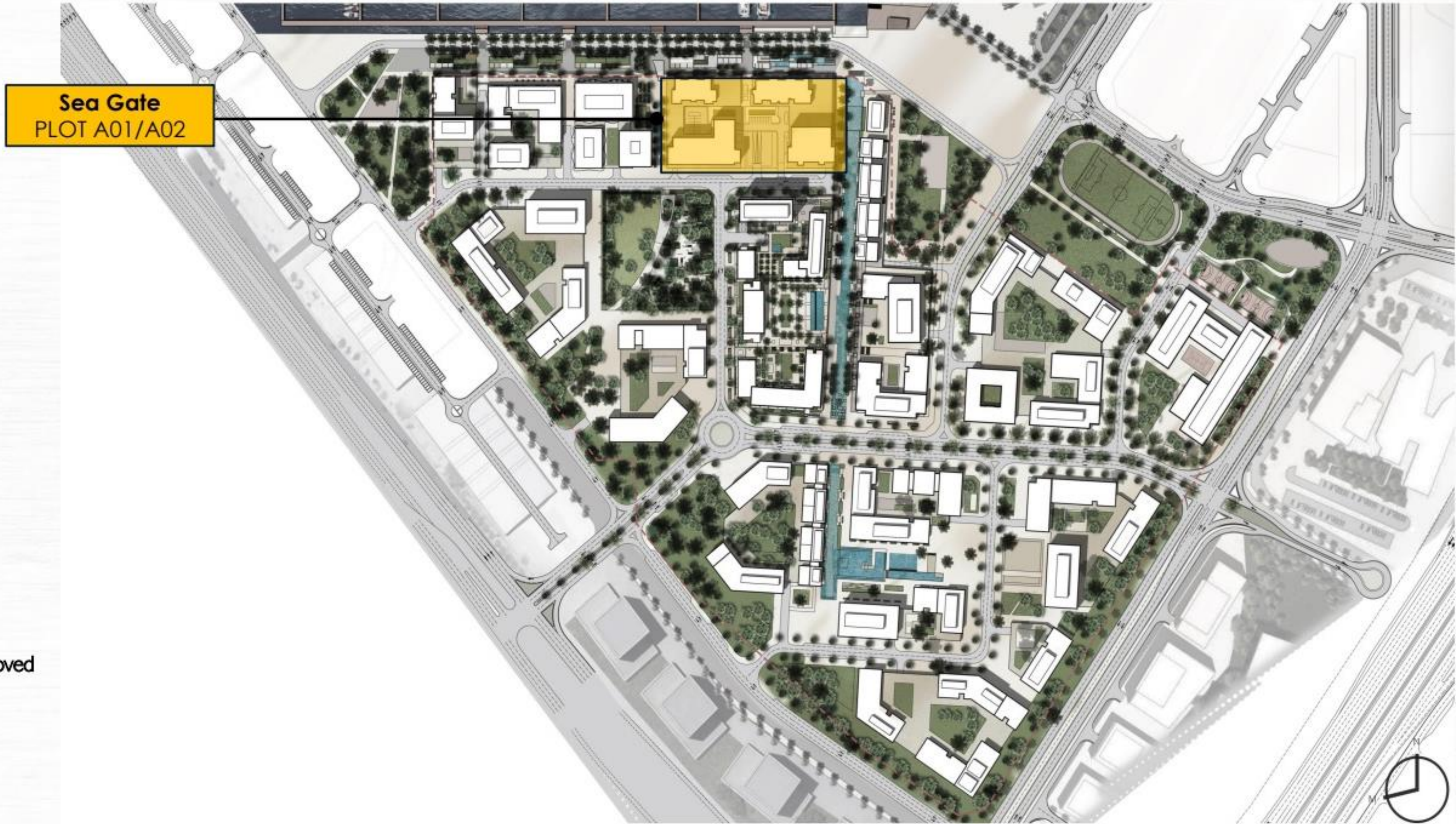
KIDS' PLAY
AREA



RETAIL AND
DINING AT YOUR
DOORSTEP



Sea Gate PLOT A01 PLOT A02



Retail GFA
2,100 sqm



GFA
38,280 sqm



282
Residential Units



4 Buildings



Oqood
Amendment Approved

Premier Residences with Dramatic Sea Views

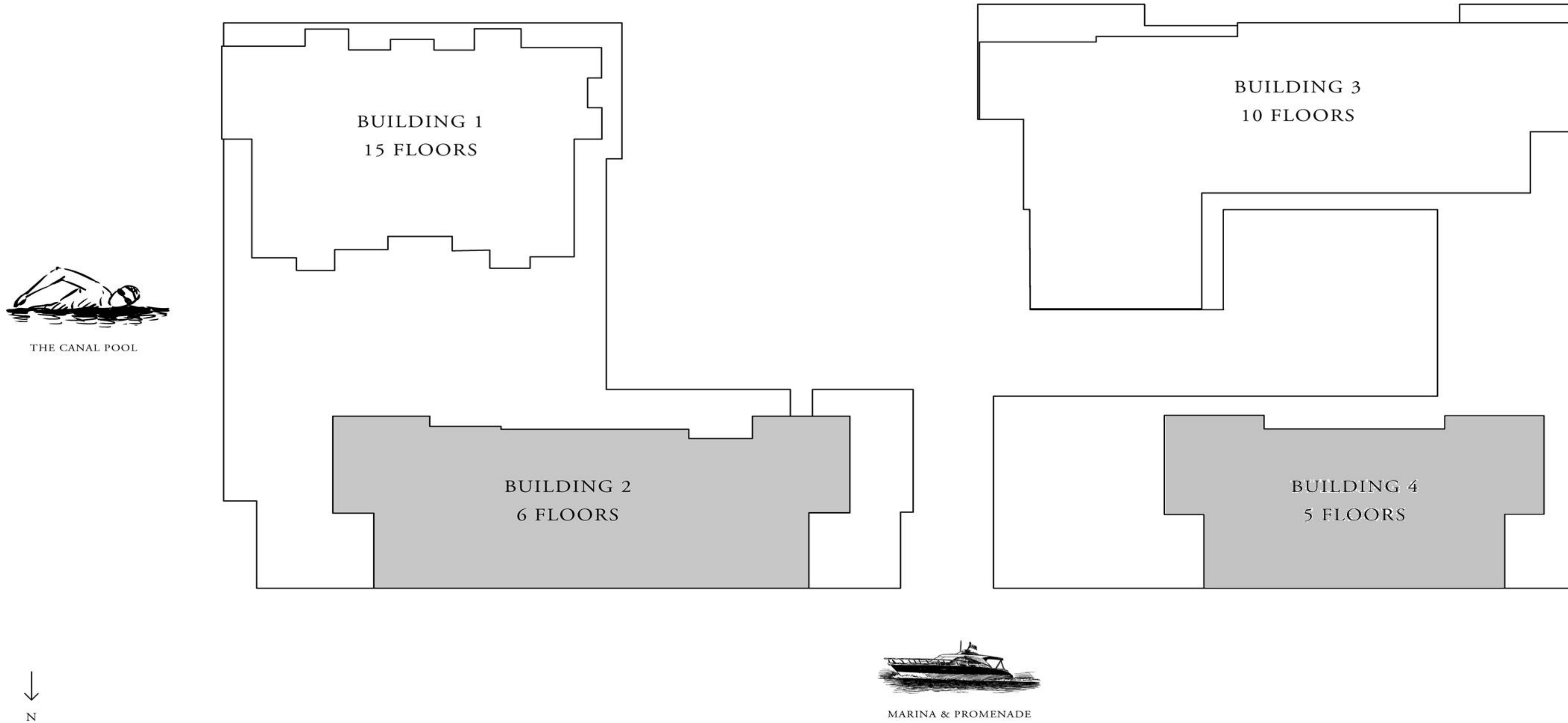
A fine collection of premium 1, 2, 3, & 4-bedroom homes overlooking gleaming white yachts and Dubai's longest swimmable canal pool. Dive into the good life in a contemporary residential oasis offering sophisticated amenities, tranquil surroundings, and exciting nearby attractions.

With a location just minutes from Dubai's many offerings, and carefully curated world-class amenities, Rashid Yachts & Marina offers the benefits of both retreat and adventure.



RASHID YACHTS & MARINA

SEAGATE



FLOOR PLAN 1. All dimensions are in imperial and metric, and measured from finish to finish excluding construction tolerances. 2. All materials, dimensions, and drawings are approximate only. 3. Information is subject to change without notice, at developer's absolute discretion. 4. Actual area may vary from the stated area. 5. Drawings not to scale. 6. All images used are for illustrative purposes only and do not represent the actual size, features, specifications, fittings, and furnishings. 7. The developer reserves the right to make revisions / alterations, at it's absolute discretion, without any liability whatsoever.

RASHID
YACHTS & MARINA

SEAGATE



EMAAR

RASHID
YACHTS & MARINA

SEAGATE

EMAAR



RASHID
YACHTS & MARINA

SEAGATE



EMAAR

RASHID
YACHTS & MARINA

SEAGATE



EMAAR

RASHID
YACHTS & MARINA

SEAGATE

EMAAR



Unit Sizes

BUILDING 2	Min Area (Sq ft)	Max Area (Sq ft)
1 BED	709	819
2 BED	1,085	1,251
3 BED	1,522	1,741
4 BED	3,016	3,242

BUILDING 4	Min Area (Sq ft)	Max Area (Sq ft)
1 BED	707	709
2 BED	1,089	1,296
3 BED	1,536	2,793



ACD : September 2025

An aerial photograph of a large yacht and a smaller boat on the water. The yacht is in the center, moving towards the right, leaving a white wake. A smaller boat is positioned behind it, also moving towards the right. The water is a deep blue color.

RASHID YACHTS & MARINA

EMAAR